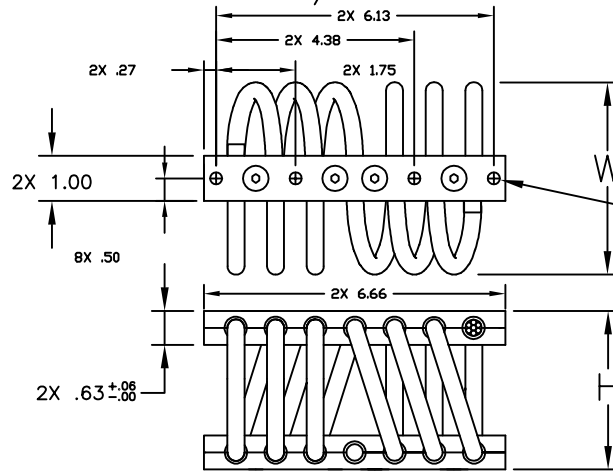


# CB1300 SERIES

3/8" WIRE ROPE



- MOUNTING HOLE SUFFIX OPTIONS.
- [ ] BLANK=  $\phi$ .28 THRU 8PL
  - C2=  $\phi$ .28 THRU C'SINK  $\phi$ .52 x 82' 8PL
  - I2= #1/4-28 INSERTS 8PL
  - CI= #1/4-28 INSERTS 4PL  $\phi$ .28 THRU C'SINK  $\phi$ .52 x 82' 4PL

ISOLATOR PART NO.	NOMINAL DIMENSIONS (in)		LOAD MODE	SHOCK AVERAGE K (lb/in)	VIBRATION AVERAGE K (lb/in)	MAX. RATED DYNAMIC TRAVEL (in)
	H $\pm$ .09	W(REF)				
CB1300-15-[ ]	2.80	3.31	COMPRESSION	1310	3395	1.00
			SHEAR/ROLL	555	550	1.20
			45 DEG. C/R	625	1860	1.60
CB1300-20-[ ]	2.90	3.50	COMPRESSION	1005	2445	1.20
			SHEAR/ROLL	420	445	1.40
			45 DEG. C/R	470	1555	2.00
CB1300-30-[ ]	3.00	4.13	COMPRESSION	655	1315	1.40
			SHEAR/ROLL	300	345	1.60
			45 DEG. C/R	310	1010	2.40
CB1300-25-[ ]	3.25	4.25	COMPRESSION	520	1030	1.60
			SHEAR/ROLL	235	270	1.80
			45 DEG. C/R	240	815	2.80
CB1300-35-[ ]	3.50	4.25	COMPRESSION	415	775	1.80
			SHEAR/ROLL	175	215	2.00
			45 DEG. C/R	190	545	3.20
CB1300-40-[ ]	4.13	4.75	COMPRESSION	300	600	2.20
			SHEAR/ROLL	130	140	2.40
			45 DEG. C/R	125	420	4.00
CB1300-50-[ ]	4.25	5.50	COMPRESSION	200	355	2.40
			SHEAR/ROLL	100	110	2.60
			45 DEG. C/R	85	300	4.40
CB1300-70-[ ]	6.00	7.50	COMPRESSION	90	110	2.40
			SHEAR/ROLL	30	70	3.60
			45 DEG. C/R	TBD	TBD	TBD

NOTES

- ALL DIMENSIONS ARE IN INCHES. INTERPRET PER ANSI Y14
- ALL DIMENSIONS ARE NOMINAL AND FOR REFERENCE ONLY

OTHER MATERIALS, COMPOUNDS, OR FINISHES WITH EQUAL OR SUPERIOR PROPERTIES MAY BE SUBSTITUTED AS THEY BECOME AVAILABLE.

**CERTIFIED FOR:**

JOB NAME: \_\_\_\_\_  
 CUSTOMER: \_\_\_\_\_  
 CUSTOMER P.O.: \_\_\_\_\_  
 SALES ORDER: \_\_\_\_\_

**MODEL CB1300 SERIES  
 WIRE ROPE ISOLATOR**



**THE VMC GROUP**  
*The Power of Together*  
 Bloomingdale, NJ 07403  
 Houston, TX 77041

SCALE:

NONE

SHEET:



DRAWING NO.:

REVISION