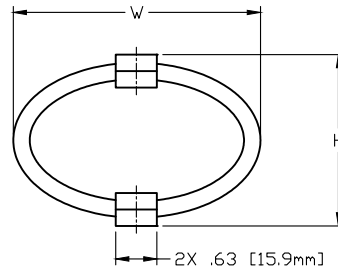
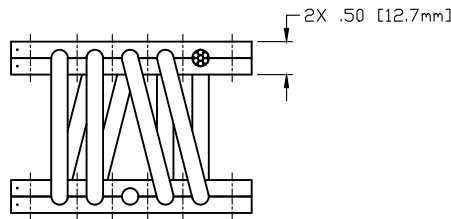
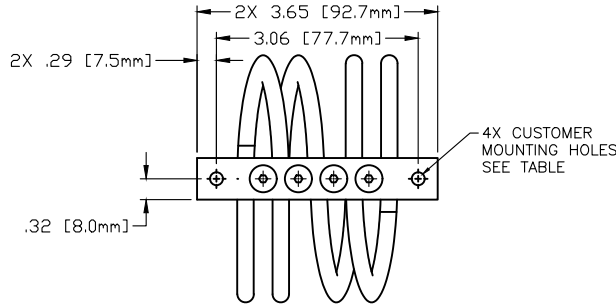


CB41280 SERIES

1/4" WIRE ROPE

REV.	DESCRIPTION	DATE	BY
------	-------------	------	----



- JCI =C'SINK ONE SIDE/INSERTS OTHER SIDE, 1/4-20 UNC
- JI2 =INSERTS BOTH SIDES, 1/4-20 UNC
- JI =INSERTS ONE SIDE/THRU HOLES OTHER SIDE, 1/4-20 UNC
- CM = (METRIC) C'SINK ONE SIDE/(METRIC) THRU HOLES OTHER SIDE
- IM = (METRIC) INSERTS ONE SIDE/(METRIC) THRU HOLES OTHER SIDE
- CIM = (METRIC) C'SINK ONE SIDE/(METRIC) INSERTS OTHER SIDE
- M = (METRIC) THRU HOLES BOTH SIDES
- CM2 = (METRIC) C'SINK BOTH SIDES
- IM2 = (METRIC) INSERTS BOTH SIDES
- C =C'SINK ONE SIDE/THRU HOLES OTHER SIDE
- I =INSERTS ONE SIDE/THRU HOLES OTHER SIDE, 1/4-28 UNF
- CI =C'SINK ONE SIDE/INSERTS OTHER SIDE, 1/4-28 UNF
- Blank =THRU HOLES BOTH SIDES
- C2 =C'SINK BOTH SIDES
- I2 =INSERTS BOTH SIDES, 1/4-28 UNF

ISOLATOR PART NO.	NOMINAL DIMENSIONS in. (mm)		LOAD MODE	SHOCK AVERAGE K (lb/in)	VIBRATION AVERAGE K (lb/in)	MAX. RATED DYNAMIC TRAVEL (in)
	H ±.25	W(REF)				
CB41280-10-[]	1.90 (48.3)	2.20 (55.9)	COMPRESSION SHEAR/ROLL 45 DEG. C/R	590 270 200	985 240 520	.60 .80 1.40
CB41280-20-[]	2.13 (54.1)	2.50 (63.5)	COMPRESSION SHEAR/ROLL 45 DEG. C/R	335 155 160	630 155 380	.80 1.00 1.60
CB41280-25-[]	2.31 (58.7)	2.80 (71.1)	COMPRESSION SHEAR/ROLL 45 DEG. C/R	245 105 100	395 110 270	1.00 1.20 1.80
CB41280-30-[]	2.50 (63.5)	3.13 (79.5)	COMPRESSION SHEAR/ROLL 45 DEG. C/R	180 70 80	340 80 225	1.20 1.40 2.00
CB41280-35-[]	2.50 (63.5)	3.50 (88.9)	COMPRESSION SHEAR/ROLL 45 DEG. C/R	125 60 65	235 65 180	1.20 1.60 2.20
CB41280-38-[]	2.63 (66.8)	3.75 (95.3)	COMPRESSION SHEAR/ROLL 45 DEG. C/R	100 55 50	210 55 135	1.40 1.80 2.40
CB41280-40-[]	2.63 (66.8)	3.95 (100.3)	COMPRESSION SHEAR/ROLL 45 DEG. C/R	80 40 35	135 40 90	1.40 2.00 2.60
CB41280-50-[]	3.25 (82.6)	4.20 (106.7)	COMPRESSION SHEAR/ROLL 45 DEG. C/R	55 30 25	105 35 70	2.00 2.20 3.20

NOTES

- ALL DIMENSIONS ARE IN INCHES. INTERPRET PER ANSI Y14
- ALL DIMENSIONS ARE NOMINAL AND FOR REFERENCE ONLY

OTHER MATERIALS, COMPOUNDS, OR FINISHES WITH EQUAL OR SUPERIOR PROPERTIES MAY BE SUBSTITUTED AS THEY BECOME AVAILABLE.

CERTIFIED FOR:

JOB NAME: _____
 CUSTOMER : _____
 CUSTOMER P.O.: _____
 SALES ORDER: _____

**MODEL CB41280 SERIES
 HELICAL WIRE ROPE
 ISOLATOR**



THE VMC GROUP
The Power of Together
 Bloomingdale, NJ 07403
 Houston, TX 77041

SCALE :
NONE
 SHEET:



DRAWING NO.: _____ REVISION