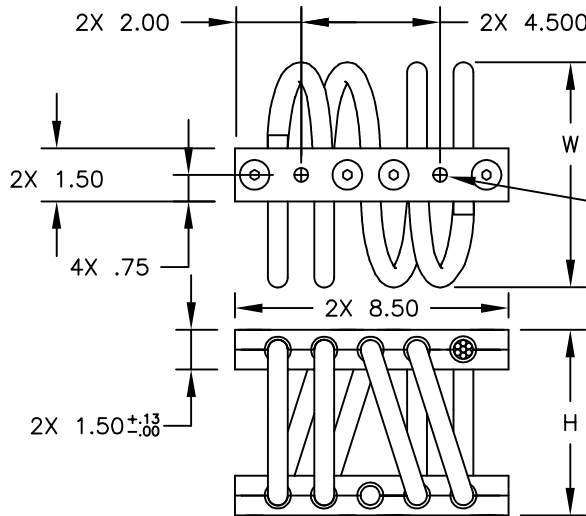


CB41800 SERIES

1" WIRE ROPE



MOUNTING HOLE SUFFIX OPTIONS.

- [] BLANK= ø.53 THRU 4PL
- C2= ø.53 THRU C'SINK ø.99 x 82' 4PL
- T2= #1/2-13 TAP4PL
- CT= #1/2-13 TAP 2PL ø.53 THRU C'SINK ø.99 x 82' 2PL

* INSERTS ARE NOT STANDARD FOR THE LARGER SERIES ISOLATORS

ISOLATOR PART NO.	NOMINAL DIMENSIONS (in)		LOAD MODE	SHOCK AVERAGE K (lb/in)	VIBRATION AVERAGE K (lb/in)	MAX. RATED DYNAMIC TRAVEL (in)
	H±.25	W(REF)				
CB41800-15-[]	5.25	5.50	COMPRESSION SHEAR/ROLL 45 DEG. C/R	6050 3110 3595	16000 3000 11400	2.00 2.00 2.40
CB41800-17-[]	6.00	6.50	COMPRESSION SHEAR/ROLL 45 DEG. C/R	4650 2235 2510	11200 2140 7000	2.40 2.40 3.20
CB41800-20-[]	6.25	7.00	COMPRESSION SHEAR/ROLL 45 DEG. C/R	2955 1420 1625	6800 1240 4400	2.80 2.80 3.60
CB41800-30-[]	7.50	8.25	COMPRESSION SHEAR/ROLL 45 DEG. C/R	1540 720 910	3800 650 2600	3.60 3.60 4.80
CB41800-40-[]	8.50	9.25	COMPRESSION SHEAR/ROLL 45 DEG. C/R	1025 435 540	2920 480 1540	4.00 4.00 6.40

NOTES:

- ALL DIMENSIONS ARE IN INCHES. INTERPRET PER ANSI Y14
- ALL DIMENSIONS ARE NOMINAL AND FOR REFERENCE ONLY

OTHER MATERIALS, COMPOUNDS, OR FINISHES WITH EQUAL OR SUPERIOR PROPERTIES MAY BE SUBSTITUTED AS THEY BECOME AVAILABLE.

CERTIFIED FOR:

JOB NAME: _____
 CUSTOMER: _____
 CUSTOMER P.O.: _____
 SALES ORDER: _____

**MODEL CB41800 SERIES
WIRE ROPE ISOLATOR**



THE VMC GROUP
The Power of Together
 Bloomingdale, NJ 07403
 Houston, TX 77041

SCALE:

NONE

SHEET:



DRAWING NO.:

REVISION