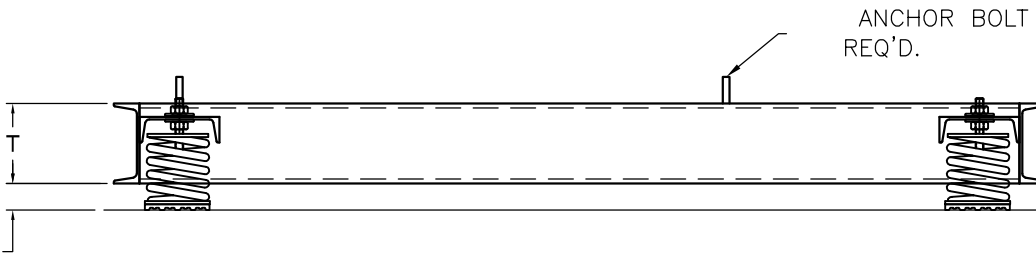
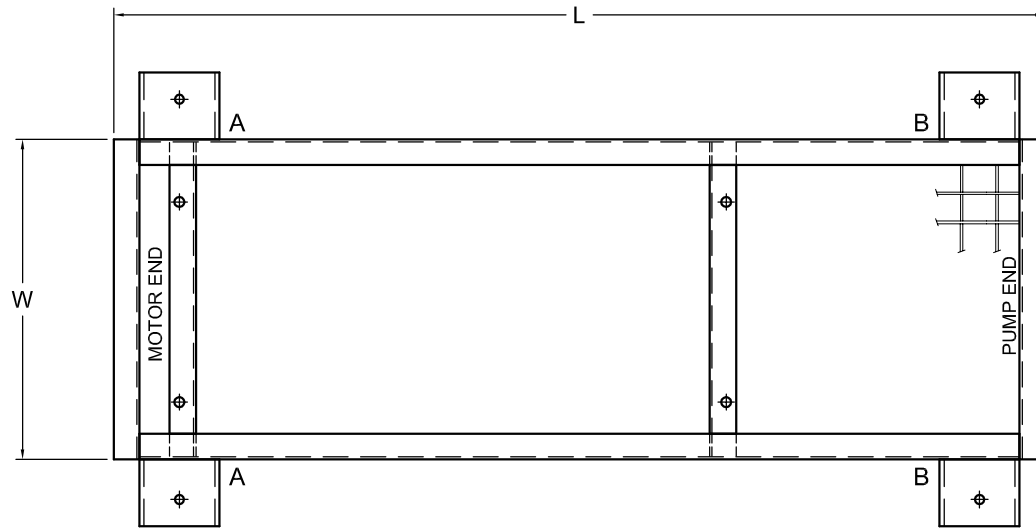
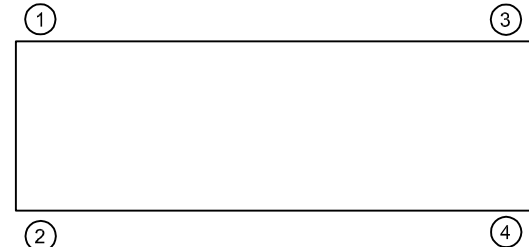


REV.	DESCRIPTION	DATE	BY



TAG:  
 NOTE: ( ) BASE(S) REQUIRED.  
 ALL DIMENSIONS IN INCHES.  
 CONCRETE WEIGHT \_\_\_\_\_  
 BASE SHIPPING WEIGHT \_\_\_\_\_

- NOTES:**
- HEIGHT OF PRODUCT VARIES PER MOUNT.
  - CLEARANCE UNDERNEATH THE UNIT VARIES PER FRAME CONSTRUCTION.
  - LENGTH AND WIDTH VARIES PER APPLICATION DEMANDS OR PRODUCT CONSTRUCTION.
  - METHOD OF FRAME OR BASE ATTACHMENT TO ISOLATORS MAY VARY PER FRAME OR MOUNT.
  - MOUNT ILLUSTRATION MAY VARY PER APPLICATION OR PROJECT REQUIREMENTS.
  - ANCHORING OR BOLT DOWN REQUIREMENTS VARY PER MOUNT OR PROJECT REQUIREMENTS.
  - INSTALLATION INSTRUCTIONS VARY PER MOUNT OR PROJECT REQUIREMENTS; CONTACT MANUFACTURER FOR INSTALLATION INSTRUCTIONS.
  - STEEL FRAMING, REBAR, TEMPLATES, BRACKETS, ISOLATORS BY VMC. INSTALLATION BY OTHERS.
  - CUSTOM CUT LENGTH AND WIDTH AVAILABLE; CONTACT VMC FOR AVAILABILITY.
  - RATED DEFLECTIONS ARE WITHIN 25% OF NOMINAL. HIGHER DEFLECTIONS ARE ALLOWED IF THEY MEET SPECIFICATIONS.



ISOLATOR SELECTIONS	
LOC 1:	LOC 2:
LOC 3:	LOC 4:
CUSTOMER EQP'T. TAG:	

NOTE: MATERIAL SHOWN IS FOR (1) SET.

OTHER MATERIALS, COMPOUNDS, OR FINISHES WITH EQUAL OR SUPERIOR PROPERTIES MAY BE SUBSTITUTED AS THEY BECOME AVAILABLE.

**CERTIFIED FOR:**

JOB NAME: \_\_\_\_\_

CUSTOMER : \_\_\_\_\_

CUSTOMER P.O.: \_\_\_\_\_

SALES ORDER: \_\_\_\_\_

**MODEL CPF NON SEISMIC INERTIA BASE  
 PUMP 2 INCH DEFLECTION**



**THE VMC GROUP**  
*The Power of Together*  
 Bloomingdale, NJ 07403  
 Houston, TX 77041

SCALE : <b>NONE</b>	
SHEET:	
DRAWING NO.:	REVISION