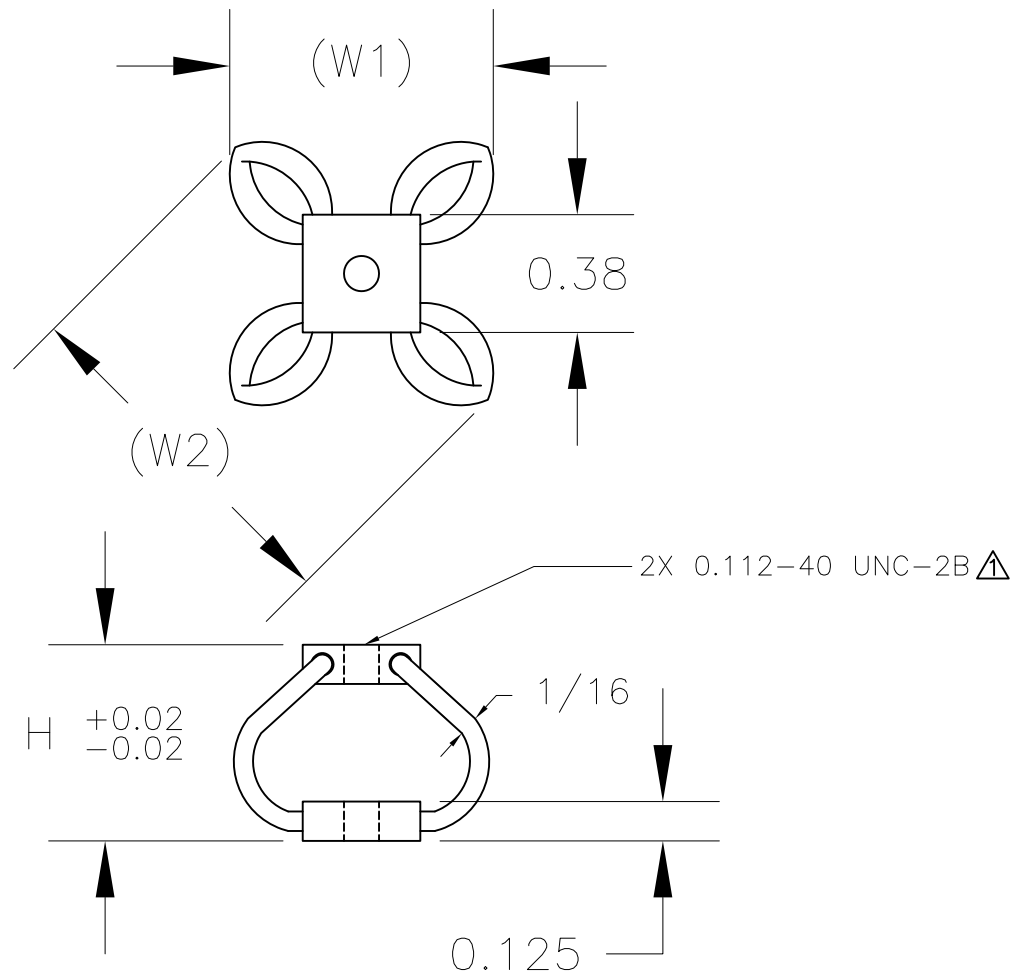


| REV. | DESCRIPTION | DATE | BY |
|------|-------------|------|----|
| | | | |

| MODEL # | NOMINAL DIMENSIONS | | | LOAD MODE | SHOCK AVERAGE Klbs./in. | VIBRATION AVERAGE Klbs./in. | RATED DYNAMIC TRAVEL in. |
|-------------|--------------------|---------|---------|-------------|----------------------------|--------------------------------|--------------------------|
| | H | W1(REF) | W2(REF) | | | | |
| JSQ2-044-T2 | 0.44 | 0.70 | 0.92 | Compression | 45 | 55 | 0.19 |
| | | | | Shear | 25 | 25 | 0.19 |
| | | | | 45 deg. C/R | 30 | 40 | 0.27 |
| JSQ2-050-T2 | 0.50 | 0.78 | 1.03 | Compression | 30 | 40 | 0.25 |
| | | | | Shear | 20 | 15 | 0.25 |
| | | | | 45 deg. C/R | 15 | 25 | 0.35 |
| JSQ2-062-T2 | 0.62 | 0.84 | 1.10 | Compression | 15 | 25 | 0.37 |
| | | | | Shear | 10 | 10 | 0.37 |
| | | | | 45 deg. C/R | 10 | 15 | 0.52 |



NOTES
 ▲ SUFFIX-TM2= METRIC M3x0.5 TAPPING

OTHER MATERIALS, COMPOUNDS, OR FINISHES WITH EQUAL OR SUPERIOR PROPERTIES MAY BE SUBSTITUTED AS THEY BECOME AVAILABLE.

CERTIFIED FOR:

JOB NAME: _____
 CUSTOMER: _____
 CUSTOMER P.O.: _____
 SALES ORDER: _____

**MODEL JSQ2 SERIES
 SQUARE WIRE ROPE
 ISOLATOR**



VMC GROUP
 THE POWER OF TOGETHER™
 Bloomingdale, NJ 07403
 Houston, TX 77041

SCALE:

NONE

SHEET:

1 OF 1

DRAWING NO.:

REVISION

