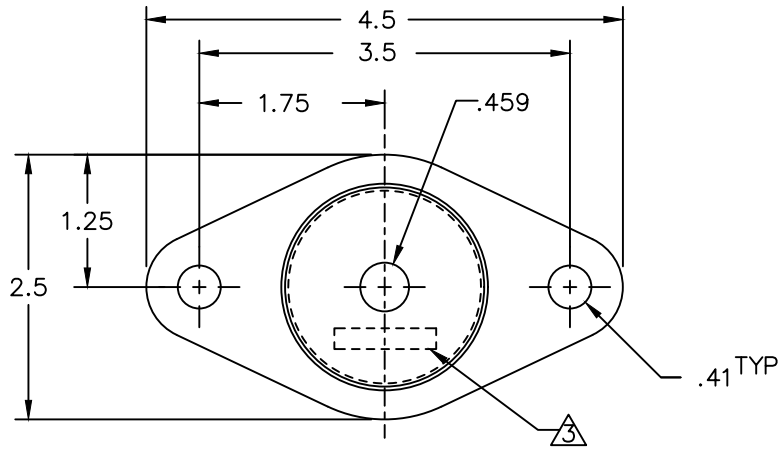
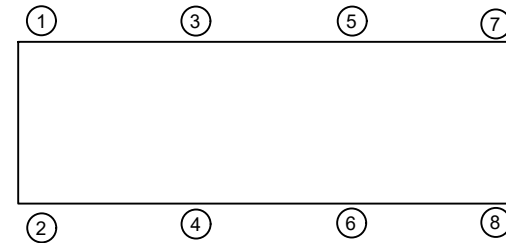
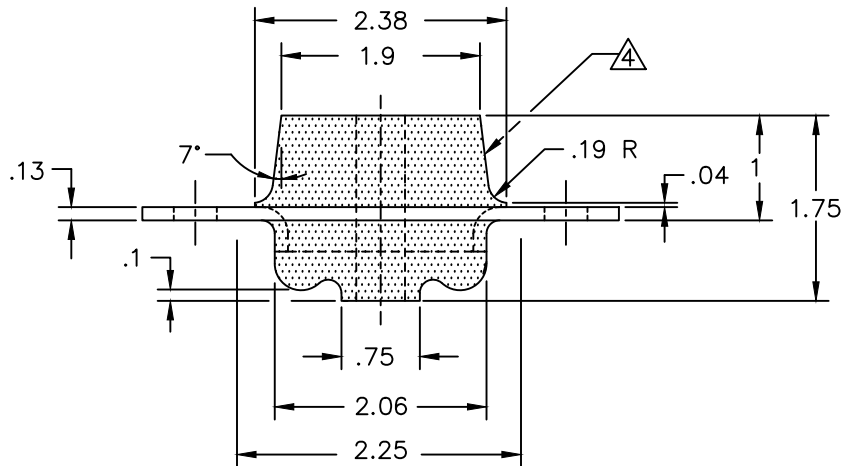


REV.	DESCRIPTION	DATE	BY



PART NO.	MODEL NO.	DUROMETER ± 5	MATERIAL	COLOR
770002-1	LF1-150	40	BR BRG NEO	RED
770002-2	LF1-200	50	BR BRG NEO	GREEN
770002-3	LF1-270	50	BR BRG NEO	YELLOW
770002-4	LF1-350	60	BR BRG NEO	BLUE
770002-5	LF1-500	70	BR BRG NEO	WHITE



NOTES:

1. ALL DIMENSIONS IN INCHES. INTERPRET PER ANSI Y14.
2. MAX. FLASH EXTENSION .063
3. MODEL NO. STAMPING ON SURFACE INDICATED.
4. COLOR CODE "MARK" ON SURFACE INDICATED, ACCEPTABLE ADDITION TO MODEL STAMPING
5. ALL DIMENSIONS ARE FOR REFERENCE, DIMENSIONS SHOWN AS NOMINAL.

ISOLATOR SELECTIONS

LOC 1:	LOC 2:
LOC 3:	LOC 4:
LOC 5:	LOC 6:
LOC 7:	LOC 8:
CUSTOMER EQP'T. TAG:	

NOTE: MATERIAL SHOWN IS FOR (1) SET.

OTHER MATERIALS, COMPOUNDS, OR FINISHES WITH EQUAL OR SUPERIOR PROPERTIES MAY BE SUBSTITUTED AS THEY BECOME AVAILABLE.



CERTIFIED FOR:

JOB NAME: _____
 CUSTOMER : _____
 CUSTOMER P.O.: _____
 SALES ORDER: _____

**MODEL LF1 150-500 LBS.
 SNUBBED ELASTOMERIC
 ISOLATOR**



VMC GROUP
 CONTROLLED ENVIRONMENT SOLUTIONS™

Bloomington, NJ Houston, TX Corona, CA Wind Gap, PA

SCALE :	SHEET:	DRAWING NO.:	REVISION
NONE	1 OF 1		