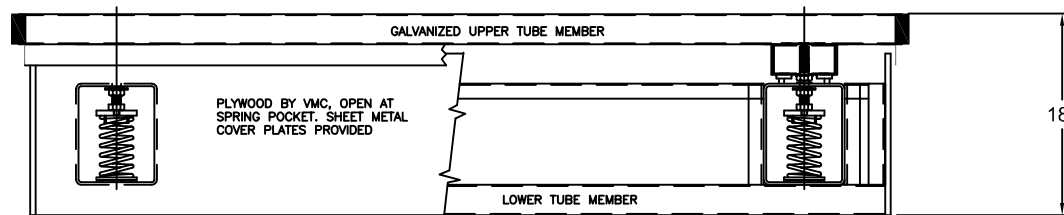
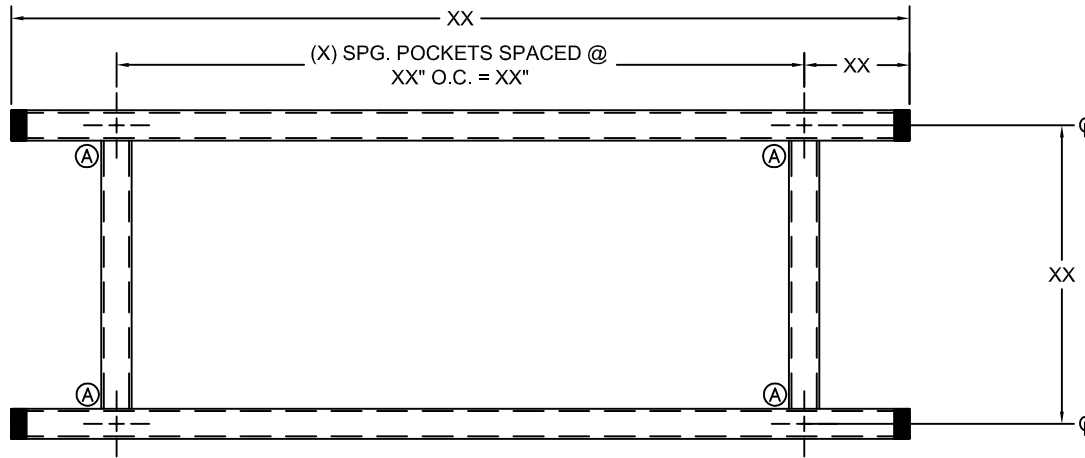


229R-103887 REV: 1

REV.	DESCRIPTION	DATE	BY



- NOTES:**
- RAILS ARE SHIPPED IN _____ PIECE(S) WITH _____ SPLICES REQUIRING FIELD ASSEMBLY.
 - TOTAL RAIL ASSY. WEIGHT IS _____ POUNDS.
 - USE "STEEL CENTERLINE" DIMENSION TO LOCATE REQUIRED STRUCTURAL SUPPORT STEEL.
 - RAILS SHOULD BE WELDED TO SUPPORT STEEL AT EVERY SPRING HOUSING LOCATION. USE MINIMUM 1/4" FILLET, 3" LONG, ON EACH SIDE OF POCKET, OR AS REQUIRED PER SPECIFICATIONS.
 - REFER TO INSTALLATION INSTRUCTIONS FOR ASSEMBLY, WATERPROOFING AND ADJUSTMENT PROCEDURE.
 - ROOF RAILS MUST BE LEVEL IN RAIL LENGTH WITH A MAXIMUM ALLOWABLE SLOPE OF 1/8" PER FOOT OR PER UNIT MANUFACTURERS REQUIREMENT, (WHICHEVER IS LESS). THE RAILS MUST BE LEVELED ACROSS THE WIDTH, AS GENERALLY REQUIRED BY THE UNIT MANUFACTURER FOR PROPER DRAINAGE.

TAG: _____

MANUFACTURER: _____

MODEL NUMBER: _____

OPERATING WEIGHT: _____

 X SET(S) OF RAILS REQ'D.

SPRING POCKET LOCATION	SPRING IDENT. NO.	MAX. RATED LOAD PER POCKET	MAX. DEFL. (IN.)
A	XXX	XXX#	2.0

OTHER MATERIALS, COMPOUNDS, OR FINISHES WITH EQUAL OR SUPERIOR PROPERTIES MAY BE SUBSTITUTED AS THEY BECOME AVAILABLE.

CERTIFIED FOR:

JOB NAME: _____

CUSTOMER: _____

CUSTOMER P.O.: _____

SALES ORDER: _____

**MODEL R7200 ISOLATED
SEISMIC WIND
RESTRAINT SPRING ISOLATED RAIL
PLAN VIEW**



THE VMC GROUP
The Power of Together
Bloomingdale, NJ 07403
Houston, TX 77041

SCALE:

NONE

SHEET:



DRAWING NO.:

REVISION