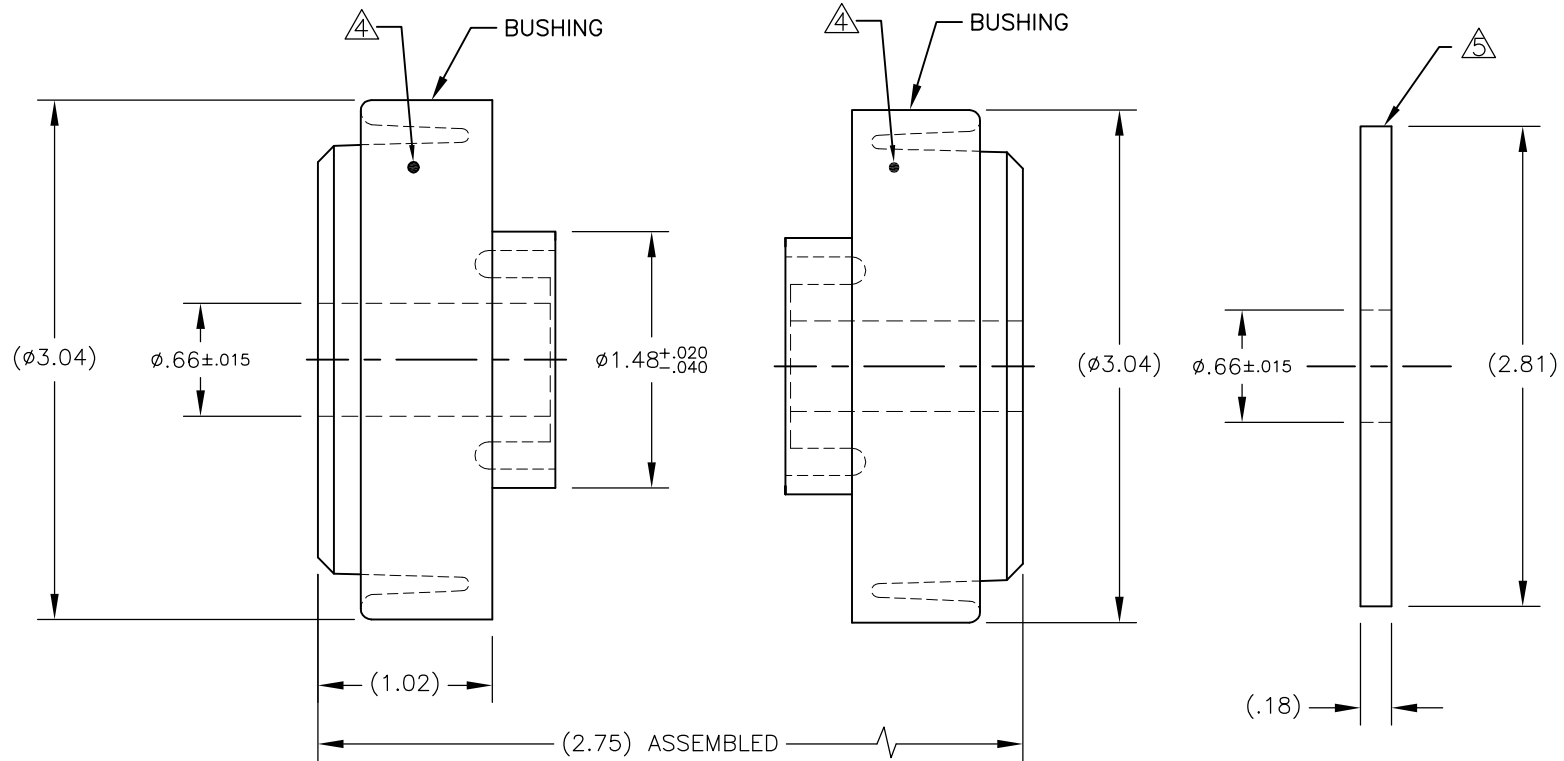


REV.	DESCRIPTION	DATE	BY



NOTE:

- MOLDED RUBBER AND STEEL MOUNT FOR FAIL SAFE INDUSTRIAL AND COMMERCIAL APPLICATIONS WHEN PROPERLY INSTALLED. MOUNT CONSIST OF TWO IDENTICAL BUSHINGS.
- INSTALL IN A ø1.50" MIN. HOLE THRU A .75" THK MTG. PLT.
- DESIGNED FOR USE WITH A ø5/8" BOLT, TIGHTENED TO 3400 IN-LB OF TORQUE.
- COLOR CODE DOT INDICATES MODEL AND LOAD RATING PER TABLE.
- ZINC PLATED SNUBBING WASHER P/N 148099-3 INCLUDED UNLESS SPECIFICALLY ORDERED OTHERWISE.
- DIMENSIONS IN ( ) ARE FOR REFERENCE ONLY.

PART NO.	MODEL NO.	COLOR CODE	MATERIALS	AXIAL STATIC RATED LOAD POUNDS
770092-1	SB3-250	RED	NEOPRENE	250
770092-2	SB3-425	GREEN	NEOPRENE	425
770092-3	SB3-600	YELLOW	NEOPRENE	600
770092-4	SB3-750	WHITE	NEOPRENE	750

OTHER MATERIALS, COMPOUNDS, OR FINISHES WITH EQUAL OR SUPERIOR PROPERTIES MAY BE SUBSTITUTED AS THEY BECOME AVAILABLE.

**CERTIFIED FOR:**

JOB NAME: \_\_\_\_\_  
 CUSTOMER : \_\_\_\_\_  
 CUSTOMER P.O.: \_\_\_\_\_  
 SALES ORDER: \_\_\_\_\_

**MODEL SB3 250-750 LBS.  
 ELASTOMERIC INTERNALLY SNUBBED  
 ISOLATOR**



**THE VMC GROUP**  
*The Power of Together*  
 Bloomingdale, NJ 07403  
 Houston, TX 77041

SCALE :

NONE

SHEET:



DRAWING NO.:

REVISION